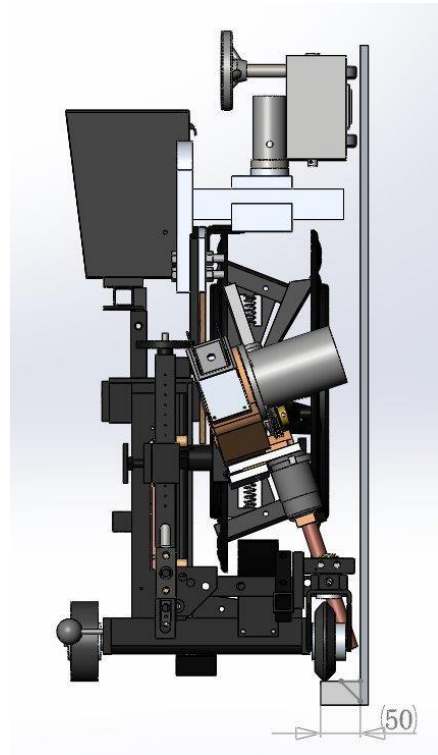


## LT7 Magnetic Attachment Kit (For Lincoln LT7 Tractor)



This is an add-on accessory for Lincoln's LT7 Tractor (K227-1) or similar welding tractors for outside the tank corner weld i.e., tank shell plate to tank bottom annular plate fillet welds. It is applicable for use on storage tank with diameter larger than 5 meter or 16 foot and base plate flange extension over 50 mm (2"). The kit consists of (3) components:

- a. Permanent Magnet Guide (Fig.1)
- b. Front lateral wheel set (Fig 2)
- c. Rear lateral wheel (3 types for different uses) (Fig. 3)



Fig. 1

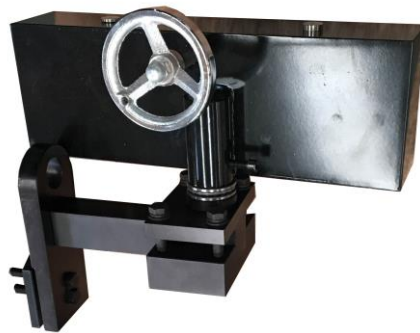


Fig. 2

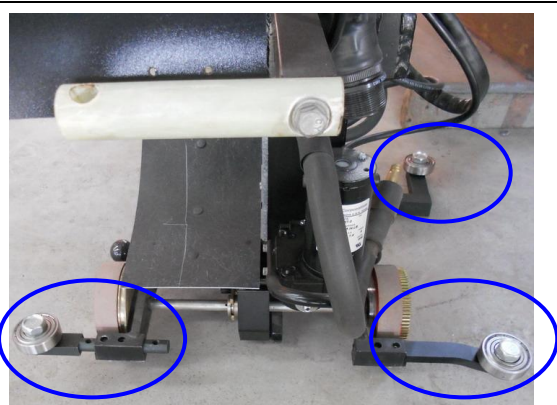
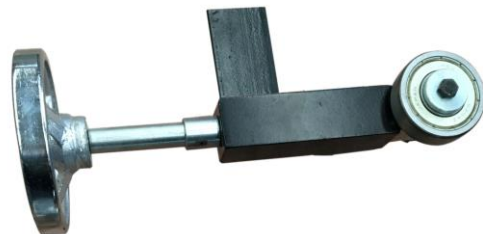


Fig. 3



## ASSEMBLY & INSTALLATION

1. The **LT7 Magnetic Attachment** uses bolts with nuts to fasten on to the LT7 lifting lug with a mounting plate as indicated in fig 5.

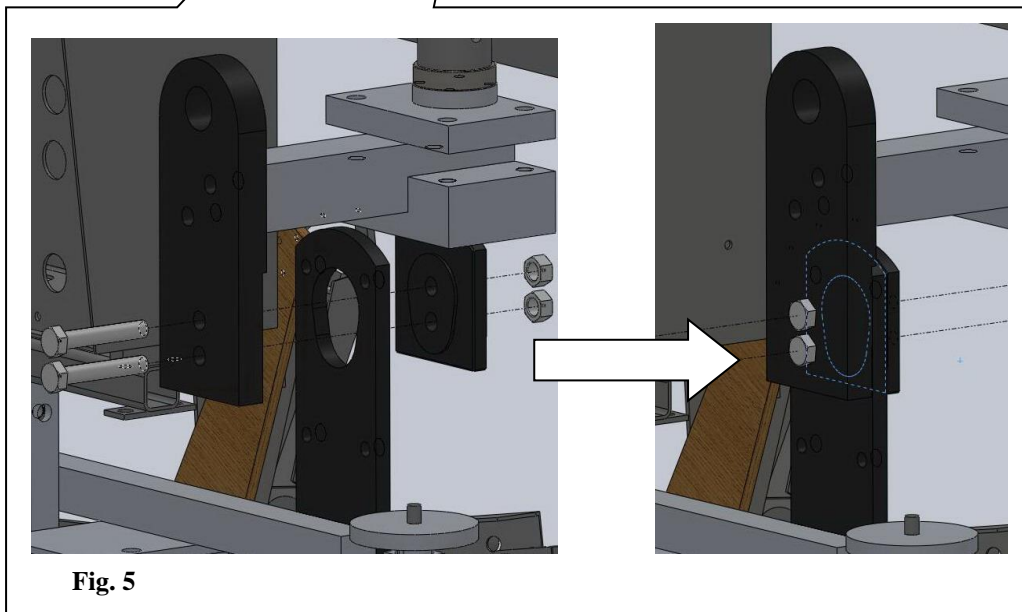
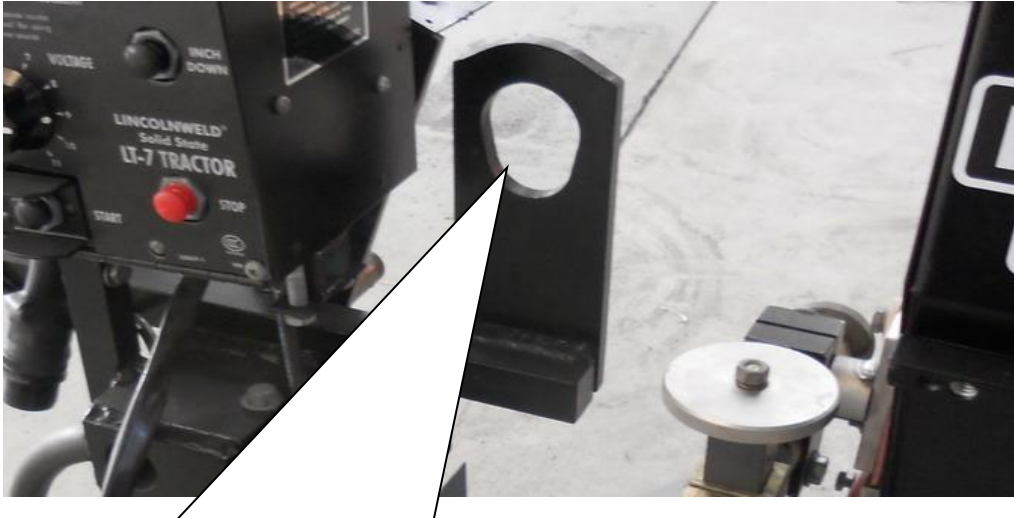
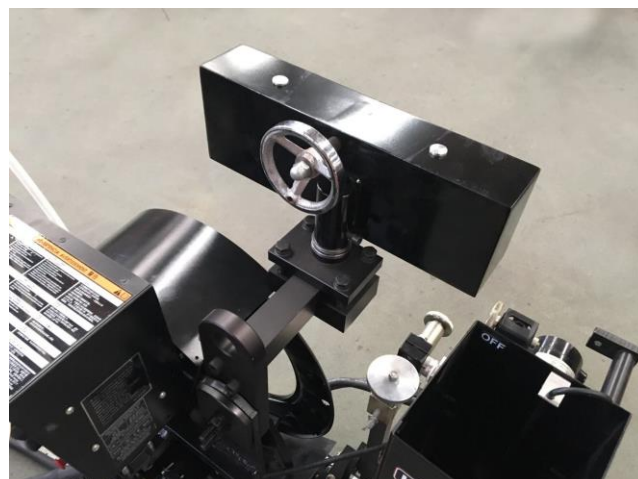
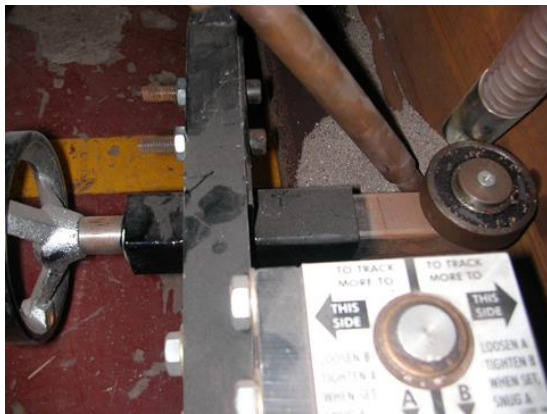


Fig. 5

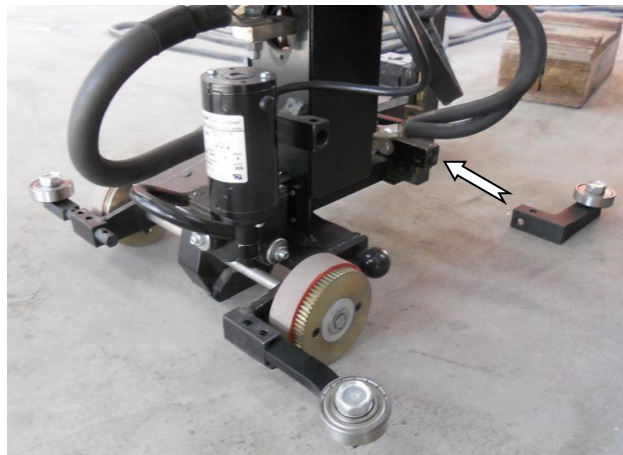




2. Mount **Front Lateral Wheel Assembly** (Fig. 6) directly on the clamp arm and steering assembly of the LT7 tractor, which allows the operator to adjust the distance between the tractor and the shell with driving wheel (Fig.7) and provides a mean of tracking when the tractor is propelling along the tank O.D. Fig. 8 illustrates a Lincoln LT7 tractor with front lateral wheel assembly readily installed.

**Fig. 6****Fig. 7****Fig. 8**

3. Mount the **Rear Lateral Wheel (3 types for different uses)** (Fig. 9) on the Frame shown in Fig. 10 to provide the necessary support of the tractor when traveling along the tank O.D.

**Fig. 9****Fig.10**